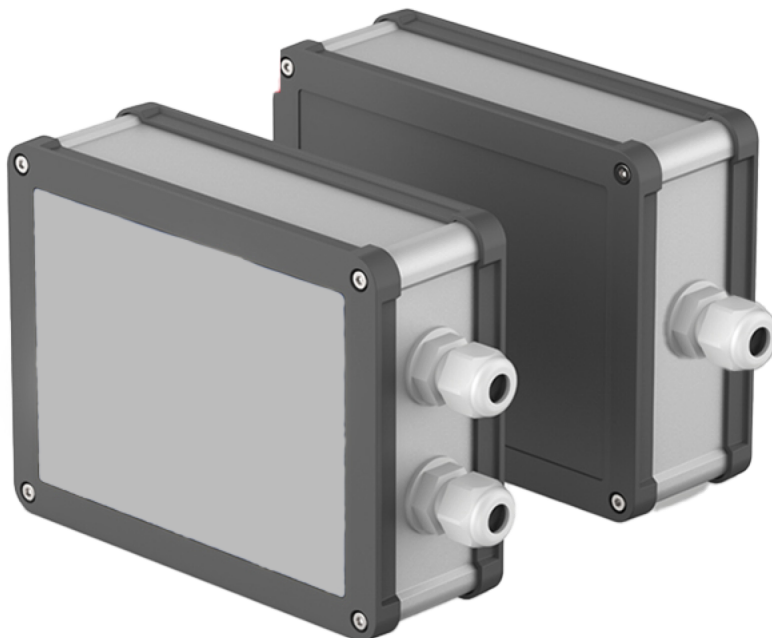




LoRa Data Acquisition (LoRaDAQ)



Specifications

CPU	Allwinner H3, Quad-core Cortex-A7 Up to 1.2GHz
DDR3 RAM	512MB/1GB
Storage	NC(RAM: 512MB) /8GB (RAM: 1GB)
Network	10/100/1000M Ethernet x1, 10/100M Ethernet x1
USB Host	Type-A x2
WiFi	802.11b/g/n, with SMA antenna interface
Bluetooth	4.0 dual mode
Debug Serial Port/UART0	3Pin 2.54mm pitch pin-header
microSD Slot	1
microUSB	for OTG and power input
LED	3
PCB Dimension	50.5 x 60mm
Power	DC 5V/2A
Working temperature	-20°C to 70°C
OS Support	FriendlyCore 16.04(based on UbuntuCore-16.04) FriendlyWrt 19.07.1(Linux-4.14 + U-boot-2017.11) eFlasher

*Photo is for reference only.